



PHOTO: John and Margaret Baird share a laugh with Myles Laing as their beloved home starts its journey to another family.

Read on to see how John and Margaret turned years of earthquake frustrations into an inspiring example of how they took back control, working creatively with a tight budget to build a new dream home on their existing site.

HOME IS WHERE OUR HEART IS

WE JUST WANTED TO STAY PUT, IN THE NEIGHBOURHOOD WE LOVED. BUT WE COULDN'T GET A STRAIGHT ANSWER OUT OF ANYBODY...

And it had been going on for years. That takes a toll on you. We knew we weren't the only ones, but that's cold comfort. While our sympathies were with our neighbours and anyone else battling to get a liveable solution from EQC and insurers, we personally felt as if our life was on hold - totally dependent on waiting for a favourable assessment from strangers.

We stopped feeling like "a number" the day Margaret found the Laing Properties website.

A google search for local builders lead us to a short video clip of a young man, Myles Laing, and just the way he talked about what he believes in when he builds a home, well, that ticked all the boxes for us. On top of an infectious enthusiasm for his craft, he seemed to genuinely care about what a home means to the people who live in it. We got the sense that Laing approached building as more than a construction process, and that taking care of people was also important to the business. We hoped that meant they would understand our unique requirements.

At some point during the years of being bounced around the various dark corners of the earthquake rebuild, we wondered if it was possible to build a *new* home on our existing site with the limited *repair* budget we had been offered. We knew this was probably a crazy idea, but if you never ask, you never know.

Margaret had been researching our options for some time, and we had a fair idea that a transportable home might be our best bet. But we hoped we could find a company close to our location, both to minimise delivery costs and to increase the chances of dealing with people who really understood what we were trying to achieve by staying in the place we loved. That clip of an earnest young Myles was enough to convince us to phone Laing Properties.

The instant we spoke to office manager Jenny, we realised we were talking with people who wanted to actually HELP us. Within minutes, we were speaking with Managing Director, Grant Laing. He immediately grasped what we were asking, and then proceeded to figure out even better options to keep us on our current site.

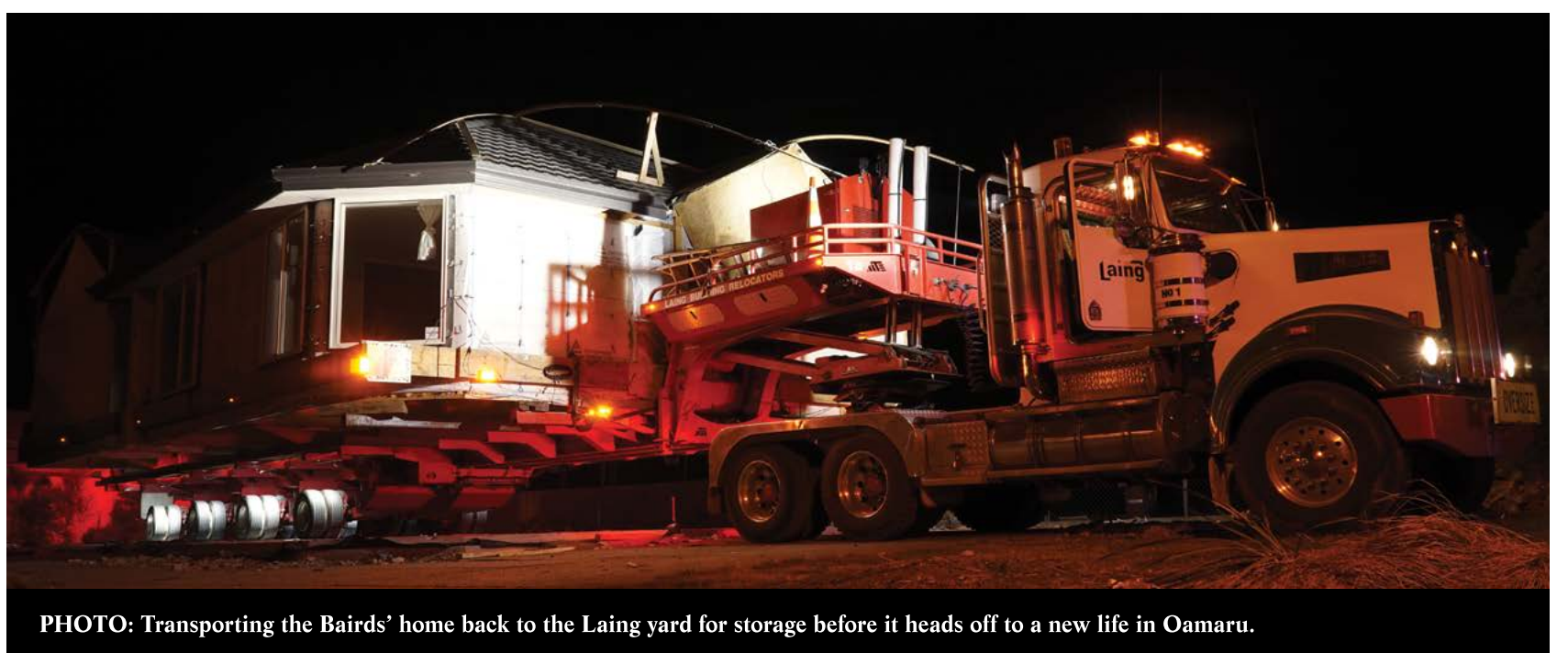


PHOTO: Transporting the Bairds' home back to the Laing yard for storage before it heads off to a new life in Oamaru.

The more Grant told us, the more we realised Laing Properties was unique in terms of choices for the rebuild. Unlike the other options we had researched, Grant's team had the expertise to manage the whole project - from saying goodbye to our damaged home, right through to unlocking the door on a new home in exactly the same spot. Grant always found a "can-do" solution for our wishes.

Something we really appreciated was the special way that Laing Properties dealt with the key phase of removing our existing damaged home from the section.

Rather than demolition, which we thought was a bit of a waste, Grants ability to call in the Laing Relocations team gave us the opportunity to remove and recycle our existing home and know it had a new life with another family. After seeing so much damage and knowing that many people have struggled to get back into decent accommodation over recent years, it felt positive to think our house was not going to waste but was going to become a home for someone else, and at the same time we could move forward with our future.

Grants logistical ability also gave us an unexpected financial bonus. Surprisingly, it cost us nothing extra to have our old house removed and to have the site readied for builders almost immediately. This was possible because Laing Properties is a single point of contact who can co-ordinate so many rebuild services - including the uncommon expertise needed to remove and transport a house. That meant we saved time, hassle and money on hiring and organising a demolition crew. The savings were added back in to our existing "repair" budget and really expanded our options for a new home.

With Grant's oversight, the whole Laing Properties team worked together seamlessly to create a project scope which totally revolved around giving us the best possible results for our investment. We soon realised the "can do" attitude is a common trait in the people who work with Grant.

Construction Manager Myles Laing stepped in again to help us select a floorplan, his enthusiasm never wavering as he modified details to give us far more than we ever imagined we could get in terms of layout, materials and the perfect space for our needs.

And we can't speak highly enough of Liz O'Neill, the Sales & Marketing Manager. Liz has been beside us every step of the way. Not only does she keep us ahead of progress on the project, but she thinks of all the little things - right down to helping us decide on those important finishing touches like kitchen and landscaping details.

So as of today, our old home has been taken away and is starting a new life with a new family. The new foundations have been installed on our existing section and Margaret and I are counting down the days until we move back in to "our place".

Our story is a long way of showing you that in four months with Laing Properties we've made more progress towards returning to a normal, happy homelife than we have in the past four years. We're living proof that you have nothing to lose and everything to gain by working with the right people on reconstructing your home. Before you build with anyone else, give Grant, Myles or Liz a call.

- John & Margaret Baird



ITS GOOD TO BE HOME.

REACHING A DISTANT DESTINATION IS AN ACHIEVEMENT FOR ANYONE. BUT IN KNOWING THAT THE JOURNEY IS OVER, THERE IS AN ADDED SATISFACTION IN RETURNING TO THE SANCTUARY OF YOUR HOME. WHEN WE'RE HOME, WE SEEM TO RELAX AND RECHARGE IN WAYS WE CAN'T DO ANYWHERE ELSE. IF HOME IS WHERE THE HEART IS, IT'S ALSO WHERE THE PEACE AND SECURITY IS FOR MOST OF US.

In the months and years following the Christchurch earthquakes, entire suburbs faced a difficult journey to re-establish the sanctuary of a normal home life. Like so many of their neighbours, John & Margaret Baird found their life on hold while they waited for assessment, insurance and repairs to their damaged home. Disillusioned with being treated like a number, and determined to find a way forward with their desire to keep living on the section they love, John & Margaret explained their situation to Laing Properties.

In speaking with Managing Director Grant Laing, John & Margaret realised that they had found a team of locals who understood their wishes, wanted to make a difference after the earthquakes, and possessed the rare skill set to manage everything required for a successful rebuild project.

Laing Properties is unique in its ability to offer design, construction and the remarkable expertise required to physically transport a house using specialised equipment and vehicles. Combined with Grant's logistical expertise, the "in-house" integration of specialised rebuild services meant John & Margaret made considerable savings on removing their damaged home from the site and were able to add that windfall into their construction budget.

The Laing's team created a "can do" project scope which revolved around giving John & Margaret maximum results for their investment. Construction Manager and Director Myles Laing and Sales & Marketing Manager Liz O'Neill kept John & Margaret informed of progress and helped manage the finishing touches, right down to options for the kitchen and landscaping. Myles Laing helped John & Margaret modify a standard floor plan until they had created their ideal combination of layout and materials. In describing how the construction team applied their expertise to bring the floor plan to life John & Margaret say, "Each of the sub contractors we met were good to relate to and they had pride in what they were wanting to achieve and it shows in the finished product."

From first conversation to foundations to finished home, Laing Properties has been intent on helping John & Margaret through the journey to re-establish the peace and security of their sanctuary, right back at the exact same address it always was. After settling in to their finished home, John & Margaret report, "We now have a home that will suit us for a long time. The outcome is a house which has exceeded our initial expectations, is very well finished and allowed for flexibility as our ideas evolved."

IS YOUR HOME THE SANCTUARY YOU WANT IT TO BE?
ASK LAING PROPERTIES HOW TO GET THE PERFECT SPACE.

The Laing team acknowledges the following suppliers for their valued contributions to our projects



"WHEN WE BUILD YOUR NEW HOME, WE BUILD A RELATIONSHIP FOR LIFE."


GRANT LAING
Managing Director

DON'T BUILD UNTIL YOU'VE SEEN ALL OUR OPTIONS!

Drop in to 15 Hanworth Avenue, Sockburn, Christchurch
P 03 349 4977 or www.laing.co.nz

